



Warren CERT eNews



Not if..... When Always Vigilant - Always Prepared

Volume 5 Issue 10

October 2019

This newsletter is brought to you by the Executive Board and is meant to give you the latest news and information from around the organization as well as further your capabilities in a disaster or emergency situation. - *Michael Riley*

IN THIS EDITION

Are You Prepared

Program your Beofeng Radio

The month in review

Scheduled Events & Training

Prepare for a Disasater

Do1Thing

Cool Products Page

ARE YOU PREPARED

Submitted by Andrew Young KB8MUA

Last winter was a very cold one.

Have we learned anything about being prepared?

It takes the whole family to work together to be as prepared as possible.

Below is a YouTube video made by a husband and wife discussing preparation for hurricane Dorian. In the discussion psychology of people as well as physical preparations is discussed before and after a storm. The location is in Florida however a lot can be gleaned for emergency preparation for here in Michigan.

[Click here to view](#)

It is (1:00:53) long but well worth the view. Have a family time watching and eating popcorn. Then discuss what each learned from the video.

The Michigan State Police has made a web site about winter preparations.

Prepare for a Winter Storm: Be Winter Ready

[Click here to view](#)

Don't feel bad if you cannot do everything you want to do. Do at least one thing you feel is most important. That could be the one thing that saves your lives.

We got 2 months to prepare before it hits again. Don't procrastinate.

Would love to hear your comments about the above on the Repeater net and/or the simplex net.

This document will help you to program your radio. In doing so you will set to the top display and store several lines of information in a single memory setting. Later when you go to that memory setting whether you are on the top display or the bottom display (A/B) everything you have entered will be recalled to your radio for immediately use. Follow this document exactly and you will have quick accurate results.

How to manually program Memory Channels into Baofeng HT Radios (UV-5R / UV-6R / BF-F8 / GT3 and all variants of the UV-5R including the BF-F8HP, UV-5X3 and UV-82 series)

Repeater frequencies with tone into a specific memory Channel

(example: **out put** frequency from repeater 147.200 {where you hear the repeater}. **in put** frequency 147.800 {what you use to transmit to the repeater}. **CTCSS** also called **tone** 100.0 {this tells the repeater to open and listen to me}. Into channel 001).

1. **Enter Frequency mode - [VFO/MR]**
2. **Activate the Upper display - [A/B]** (The top line of displayed frequency numbers)
3. **Select the correct BAND - [BAND]** (VHF or UHF)
[When using MENU choose item by a) entering the number or b) moving arrows to reach item number. In MENU mode item will be displayed at top right under battery display.]
4. **Set alarm to off --- [MENU] “32” or move [MENU] [move until “site”] - [MENU] [EXIT]**
(This will keep from accidentally transmitting an alarm signal)
5. **Turn TDR off - [MENU] “7” or move [MENU] - [move until “off”] - [MENU] [EXIT]**
(To use a channel need to be sure all data has been cleared out first)
6. **Delete channel - [MENU] “28” or move [MENU] - [input channel number _ _ _] [MENU] [EXIT]**
(a 3 digit number entered from keypad)
7. **Enter repeater’s Output frequency - [_ _ _ . _ _ _]**
(a 6 digit number entered from keypad (no decimal)) (The frequency you listen to)
8. **Tx CTCSS tone - [MENU] “13” or move [MENU] - [move to select tone _ _ _] - [MENU] [EXIT]**
9. **Save to channel - [MENU] “27” or move [MENU] - [input channel number _ _ _] - [MENU] [EXIT]**
(a 3 digit number entered from keypad, same number as from line 6 above)
10. **Enter repeater’s Input frequency - [_ _ _ . _ _ _]**
(+ or – offset to line 6 and enter here) (a 6 digit number entered from keypad (no decimal). Determined by finding if repeater is a + or a – offset input. If on VHF the offset is .600 Mh.)

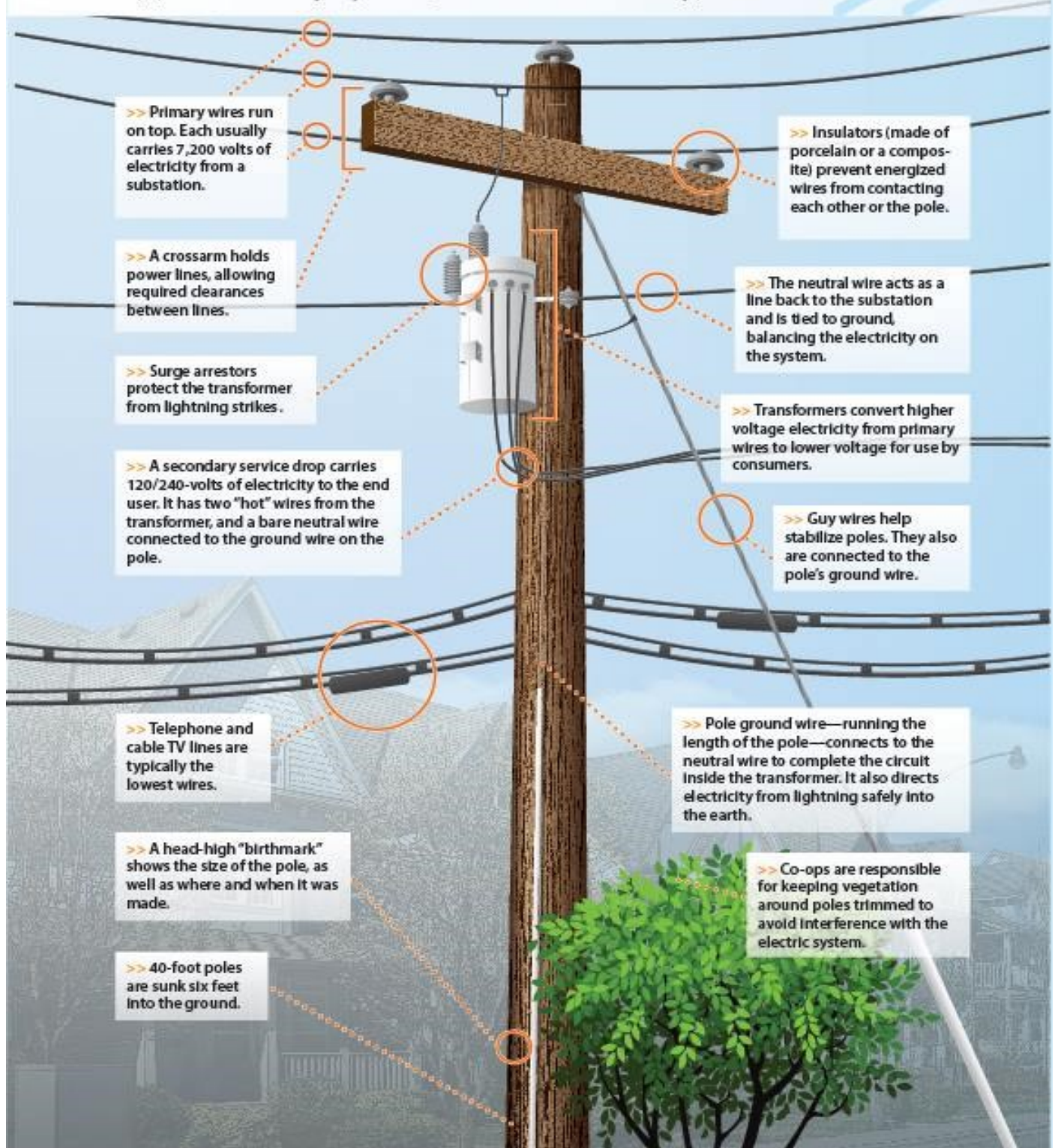
If on UHF offset is 5 Mh . In our example 147.200 is output frequency. With + direction of .600 Mh. Therefore 147.200 + .600 = 147.800 for input frequency.) On UHF 443.550 has a + offset of 5 Mh. Therefore 443.550 + 5.00 = 448.550 Input frequency.
11. **Save to channel - [MENU] “27” or move [MENU] - [input channel number _ _ _] - [MENU] [EXIT]**
(a 3 digit number entered from keypad, same number as from line 6 above)
12. **Enter Channel mode - [VFO/MR] Done**

[Source Document](#)

[See the Video](#)

>> What's on that pole?

This illustration shows basic equipment found on electric power distribution poles. Not all poles have all this equipment on them. They vary according to location and the service they provide.



>> Primary wires run on top. Each usually carries 7,200 volts of electricity from a substation.

>> Insulators (made of porcelain or a composite) prevent energized wires from contacting each other or the pole.

>> A crossarm holds power lines, allowing required clearances between lines.

>> The neutral wire acts as a line back to the substation and is tied to ground, balancing the electricity on the system.

>> Surge arrestors protect the transformer from lightning strikes.

>> Transformers convert higher voltage electricity from primary wires to lower voltage for use by consumers.

>> A secondary service drop carries 120/240-volts of electricity to the end user. It has two "hot" wires from the transformer, and a bare neutral wire connected to the ground wire on the pole.

>> Guy wires help stabilize poles. They also are connected to the pole's ground wire.

>> Telephone and cable TV lines are typically the lowest wires.

>> Pole ground wire—running the length of the pole—connects to the neutral wire to complete the circuit inside the transformer. It also directs electricity from lightning safely into the earth.

>> A head-high "birthmark" shows the size of the pole, as well as where and when it was made.

>> Co-ops are responsible for keeping vegetation around poles trimmed to avoid interference with the electric system.

>> 40-foot poles are sunk six feet into the ground.

INSTRUCTIONS FOR KA8WYN REPEATER Submitted by Andrew Young KB8MUA

Manually Programming a Baofeng HT Radio Specifically for CERT REPEATER NET ON 443.550 MHz

Specific instructions to program for KA8WYN repeater used for the Warren CERT UHF net.

Every 3rd Monday at 8:45 PM.

Repeater frequencies with tone into a specific memory Channel (example: output frequency from repeater 443.550{where you hear the repeater}. in put frequency 448.550 {what you use to transmit to the repeater}. CTCSS also called tone 107.2 {this tells the repeater to open and listen to me}. Into channel 001? You choose.).

1. Enter Frequency mode - [VFO/MR]

2. Activate the Upper display - [A/B] (The top line of displayed frequency numbers)

3. Select the correct BAND - [BAND] (VHF or UHF)

[When using MENU choose item by: a) entering the number or b) moving arrows to reach item number. In MENU mode item will be displayed at top right under battery display.]

4. Set alarm to off - [MENU] "32" or move [MENU] [move until "site"] - [MENU] [EXIT]

(This will keep from accidentally transmitting an alarm signal)

5. Turn TDR off -[MENU] "7" or move [MENU] - [move until "off"] - [MENU] [EXIT]

To use a channel, need to be sure all data has been cleared out first

6. Delete channel - [MENU] "28" or move [MENU] - [input channel number (choose your channel) (a 3-digit number entered from keypad. Ex: 002 or 042)] [MENU] [EXIT]

7. Enter repeater's Output frequency - [443550] (a 6-digit number entered from keypad (no decimal))

(The frequency you listen to)

8. Tx CTCSS tone - [MENU] "13" or move [MENU] - [move to select tone 107.2] - [MENU] [EXIT]

9. Save to channel - [MENU] "27" or move [MENU] - [input channel number (see line 6)] - [MENU] [EXIT]

(a 3-digit number entered from keypad, same number as from line 6 above)

10. Enter repeater's Input frequency - [448550]

(+ or - offset to line 6 and enter here. No decimal) (a 6-digit number entered from keypad (no decimal).

Determined by finding if repeater is a + or a - offset input. If on VHF, the offset is .600 MHz. If on UHF offset is 5 MHz. In our example 147.200 is output frequency. With + direction of .600 MHz. Therefore $147.200 + .600 = 147.800$ for input frequency.) On UHF 443.550 has a + offset of 5 MHz. Therefore $443.550 + 5.00 = 448.550$ Input frequency.

11. Save to channel - [MENU] "27" or move [MENU] - [input channel number see line 6] - [MENU] [EXIT]

(a 3-digit number entered from keypad, same number as from line 6 above)

12. Enter Channel mode --- [VFO/MR] Done

[Tri-County Amateur Radio Club - WC5C](#)

[Read it all here - Source Document](#)

Thank You to the WC5C Club for all the info!



UV-82HP (7W),
High-Power +(3rd
Gen)



UV-82C,
Commercial,
Employer Model



UV-5X3, Tribander
Model



BF-F8HP (8W), High
Power + (3rd Gen)

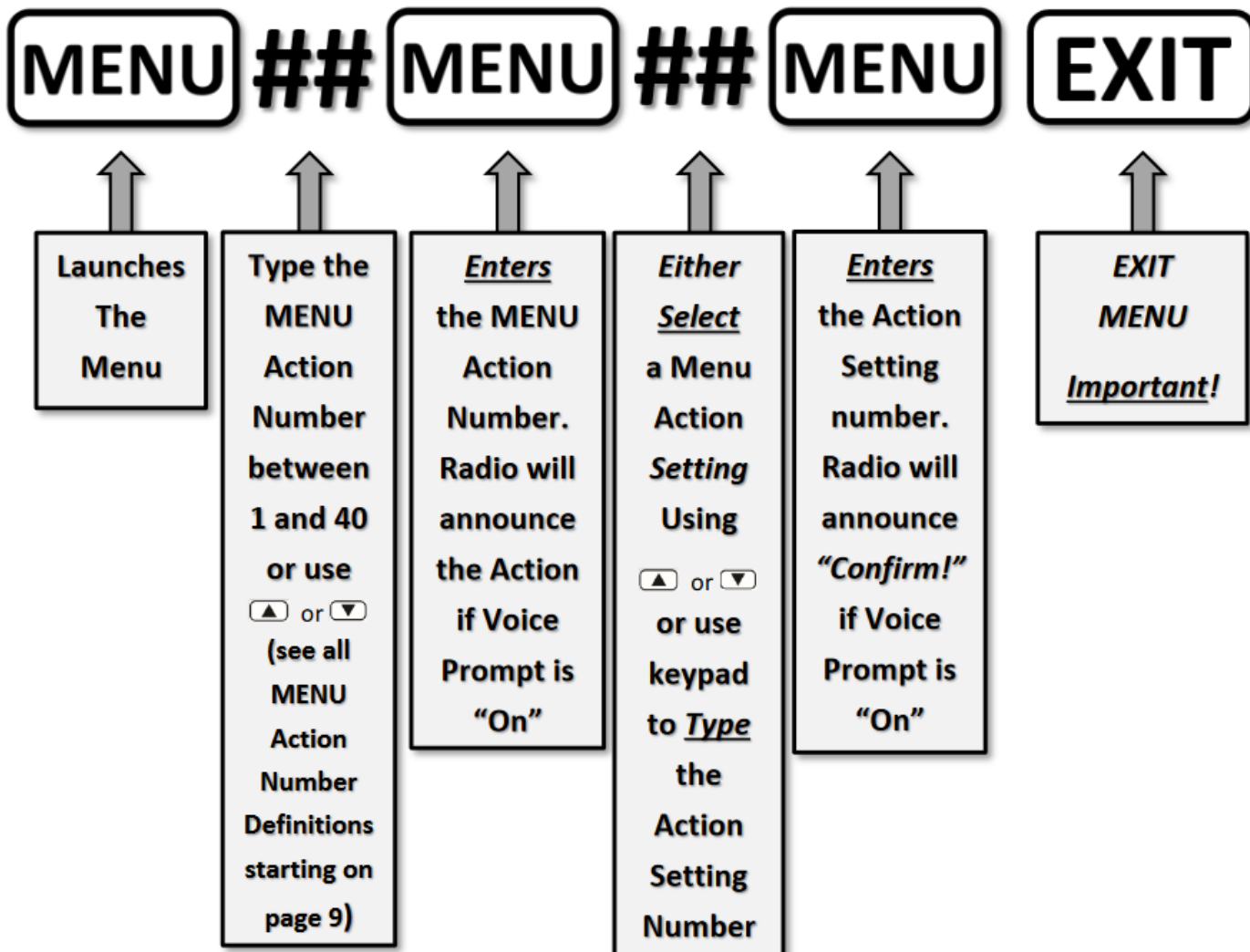


BF-F8+ Variants,
(2nd Gen)



UV-5R & Variants
(2nd Gen)

BEOFENG RADIO MENUS



Cheat Cards for programming

Manually Programming A Baofeng HT Radio Simplex Channel

1. Enter *Frequency* mode ----- (UV-82 press turn radio on)
2. Activate the *Upper* display -----
3. Select the correct BAND [only if necessary for your radio]
4. Turn TDR off ----- 7 ----- [-0-] -----
5. Delete channel ----- 28 -- [number XXX] ----
6. Enter *Frequency* ----- [XXXXXXXX]
7. **Receive** CTCSS tone -- 11 ----- [-0-] -----
8. **Transmit** CTCSS tone 13 ----- [-0-] -----
9. **Offset** direction Off ---- 25 ----- [-0-] -----
10. Save to channel ----- 27 --- [number XXX] ---
11. Enter *Channel* mode -- or (UV-82 press turn radio on)

Note – CTCSS and DCS Tones are typically *not* used for **Simplex** HAM radio operation so (unless you want to use a Tone for Simplex operation) be sure to set them to -0- (Off) for **Simplex** channels just in case you programmed a **Duplex** channel with a CTCSS or DCS (Tx and/or Rx) Tone the last time you manually programmed your radio.

Manually Programming A Baofeng HT Radio Duplex (repeater) Channel

1. Enter *Frequency* mode ---- (UV-82 press & turn radio on)
2. Activate *Upper* display ----
3. Select the correct BAND [only if necessary for your radio]
4. Turn TDR off ---- 7 ----- [-0-] -----
5. Delete channel --- 28 ---- [number XXX] ----
6. Enter repeater **Output** frequency ----- [XXXXXXXX]
7. **Tx** CTCSS tone -- 13 --- [enter/select tone] --
8. **Rx** CTCSS tone -- 11 --- [enter/select tone] --
9. Save to channel -- 27 ---- [number XXX] ----
10. Enter repeater **Input** frequency ----- [XXXXXXXX] (Output + or – Offset)
11. Save to channel -- 27 ---- [number XXX] ----
12. Enter *Channel* mode ----- or (UV-82 press turn radio on)

Step 8 is *not* necessary unless multiple repeaters using the same output frequency are nearby.

10 WAYS TO PREPARE FOR A DISASTER

1. Assume that a disaster can happen. Don't assume that it won't. Survival is 90 percent psychology, so being mentally and emotionally unprepared lowers your survival odds.
2. Try not to panic. You *will* be scared during a survival scenario, but the act of preparing before an emergency will help you deal more effectively. Spread facts, not fear. Share survival training based upon sound human psychology and physiology from reputable sources.
3. Know your limits. Unless your family is a group of Special Forces soldiers, they will have specific needs during a disaster. Lack of physical fitness, forgotten medications, mobility challenges, and a host of other variables demand that you custom-create a survival plan for your family.
4. Know how to do more with less. The simple act of tent camping in the outdoors with a family will teach you more in a weekend about what is required to live simply and be happy than reading survival books in the comfort of your living room.
5. Keep it simple. Fancy preparedness plans and survival gear fail under the pressures of a real-life scenario. The less moving parts the better.
6. Prepare for whatever disaster is likely to affect your area. Not every place on the planet has the same needs.
7. Along with your home-based supplies, create a "bug-out" kit(s) for your family, containing mobile emergency supplies should you be forced to evacuate.
8. Act: Physically prepare and act upon your preparedness plan. Talk is cheap. Practice, practice, and practice your preparedness plan; and don't be afraid to modify it as your needs change.
9. Do the neighborhood thing. Once your family is prepared, get your neighbors on the same page, similar to a neighborhood block watch.
10. When your preparation work is done, rotate certain survival-kit items such as food and medications as they expire, but live your life. Preparedness training that breeds fear and paranoia is counterproductive and the enemy of true, long-term self-reliance.

10 Steps to help prepare for a disaster



⇒ Tune into local radio, NOAA radio, or local TV stations



⇒ Stock up on nonperishable food, water and medicine

⇒ Fill your car with gas



⇒ Store important documents like passports, Social Security cards, etc., in a waterproof container

⇒ Have a first-aid kit ready



⇒ Keep away from both standing water and floodwater

⇒ Don't use tap water



⇒ Charge your phone

⇒ Prepare your house

⇒ Don't forget about animals

September

662.50 Total Volunteer Hours

320 - Call-Out / Events

165.50 - Meeting / Training Hours

177 - Executive Board / Administrative / Education

Although the IRS does not assign or allow volunteer hours a dollar amount many state and federal entities do assign a value to volunteer hours.

According to today's rate of \$24.69 the CERT team has performed

\$16,357.13

dollars of service to the residents and city of Warren this month.

Due to Computer crashing issues and 2 busy months the July hours weren't published:

560.50	40.50	221.00	822.00
Call-Out / Event / Labor	Meeting / Training	Exec Brd / Admin	Total July 2019 Hours

\$20,295.18

UPCOMING EVENTS

Full details available at meetings, emails, and official CERT calendar

Tue Oct	1	19:00	Ham Radio Test Hazel Park Radio Club
Sat Oct	5	09:00 - 13:00	General Membership Meeting
Sat Oct	12	TBD	WWT Homecoming
Fri Oct	25	TBD	Westwood Truck-N-Treat
Tue Oct	15	16:00 - 20:00	Leason's Fundraiser
Sat Oct	19	TBD	Trunk N Treat City Square
Tue Dec	3	19:00	Ham Radio Test Hazel Park Radio Club
Sat Dec	7	09:00 - 13:00	General Membership Meeting / Family Appreciation
Sat Dec	7	17:00 - 21:00	Tree Lightning

Unless otherwise indicated meetings will be held at
Warren Community Center 5460 Arden Ave, Warren, MI 48092

Watch the CERT Calendar for the latest location information and other training dates.

[Make sure you follow Warren CERT on Facebook & Twitter](#)

<https://www.facebook.com/wrncert/>

[@WarrenCERT](#)

Do the math.... Deadly Injury > EMS Response = No Vital Signs

Get Trained!

Average time to bleed out:
3 to 5 minutes



Average time for 1st responders to
arrive:
7 to 10 minutes

[Stop the Bleed](#)

EXECUTIVE BOARD

<u>Title</u>	<u>Name</u>	<u>Phone</u>	<u>Email</u>	<u>Ham Call Sign</u>
Director	Michael Riley	586-943-6110	mriley@warrencert.org	kd8fmg
Dep. Director	Mike Rose II	586-855-1685	mrose@warrencert.org	ke8cih
Coordinator	Mike Slupinski	586-214-4704	deploytheyak@outlook.com	kd8vdz
Coordinator	JoAnn Christian	586-980-2055	kd8stz@yahoo.com	kd8stz
Coordinator	Sandra Jones	586-457-6159	sgjones586@gmail.com	
Coordinator	Ron Mesic	248-830-8450	rmesic@gmail.com	n8xz
Coordinator	Eric Bordeaux	586-242-4996	ericbordeaux@comcast.net	
Secretary	Angela Middleswart	586-219-4329	amiddleswart@warrencert.org	
Coordinator	Rex Marshall	586-933-3886	rexmarshall44@yahoo.com	
Coordinator	Bill Legendre	586-872-0041	blegendre@warrencert.org	

WHAT'S NEW

> On behalf of the Board we welcome Bill Legendre to the Executive Board. We look forward to working together and appreciate your dedication to the CERT team.

> We have had many discussions on the types of batteries we use in our equipment. For those of us that use Lithium batteries Costco has a great price - \$16.99 for 20 batteries. End cost \$.85/each.

> Congratulations to our newly licensed Amateur Radio operators as well as those that obtained a higher level license.

~ Technician Class: Sam S., David M., Loretta G., Patrick M..

~ General Class: Paul H., Mike S..

*** Remember - While supplies last every Warren CERT member that gets their license will be given an Dual Band Radio. ***

> The [Nextdoor Neighborhood](#) has an app that can be used to send NON-EMERGENCY messages to Warren PD.

> Speaking of apps - [Warren Citizen 311](#) Responder app is available. An electronic means for transmitting and tracking requests for public services of a non-emergency nature to the City of Warren

> A huge Thank You and appreciate your commitment to Krystal Legendre for volunteering to take over some of the daunting data entry tasks for the team!

> Tune into the Warren CERT Radio Net - 3rd Monday of the month @ 20:45 on the KA8WYN repeater.

CERT POLICIES MEMBERS NEED TO KNOW

Warren CERT ID and Lanyard can ONLY be worn when activated as Warren CERT and must NOT be visible when stored in your vehicle. Do not keep lanyards in your cup holders, hanging from your rear view mirror, or other obvious place. You need to assure it does not get stolen or is used to misrepresent the team.

When deployed on Warren CERT events, logos and ID's from any other agency's cannot be worn. This includes, but is not limited to Badges (Security, Hospital, Work, etc.), Shirts or uniforms with logos of other agencies (Police, Sheriff, Fire, Ambulance, Security, even other CERT teams). Displaying multiple identifying marks causes confusion and can possibly place you in unwanted and dangerous circumstances.

Under no circumstances should you self-deploy!! IF YOU SELF-DEPLOY AND ARE INJURED YOU ARE ON YOUR OWN! IF YOU SELF-DEPLOY AND ARE INJURED YOU ARE NOT COVERED BY THE CITY! If you decide to offer assistance without being called out by during a city sanctioned event you are doing so as a civilian and assume all responsibility.

You are authorized to use your red warning light while on official CERT call-outs or events and when you are using it according to CERT guidelines. You must be stationary while it is in use. You are only authorized to use it while in the city of Warren. Your light should not be visible outside of the city

Warren CERT has a Chain of Command and every member is subject to follow it. If you ever have any questions or problems bring it to your executive board. No member will email or call a city official concerning a CERT topic without having gone thru the executive board or Emergency Manager.

Under no circumstances should any member attempt to approach or attempt to move any downed wire!

All safety policies and procedures must be followed at all times.

All members, at all times, must exhibit professionalism.

No smoking, indecent or lewd behavior or discussion will be tolerated.

ANY VIOLATION OF THE ABOVE GUIDELINES COULD RESULT IN DISCIPLINARY ACTION, EXPULSION FROM THE CERT TEAM OR CRIMINAL CHARGES.

IMPORTANT INFO

Remember to call 586-960-5315 and leave your name, time arrived, time departed, and what scene or event your calling about!

Please like our Facebook page [Facebook.com/wrncert](https://www.facebook.com/wrncert)

**Don't forget to tell your friends and neighbors, about CERT.
We're always looking for good people.**

[Apply at warrencert.org](http://warrencert.org)

Make sure you continue to receive this eLetter and are signed up to the electronic version of the official CERT calendar.

[Check your texcom.com info to assure its current!](http://texcom.com)

Warren CERT Call-Out Procedures

Warren CERT uses Texcom.com as its primary dispatch and notification system.

All CERT members must be registered with Texcom with SMS (texting) and email. *An exception is allowed for members that do not use texting or email.*

When a call out request is received from an official source the on-duty CERT dispatcher will immediately relay the help request to the members via texcom using text messages and email.

Every message will contain specific details on how to contact dispatch and respond to requests.

Responding parties must respond as detailed in the message.

A request may advise to **call** "Dispatcher Name" at 586-xxx-xxxx.

In this case as stated **call** the dispatcher and advise of availability and interest in responding.

A request may advise to **text** to "Dispatcher Name" at 586-xxx-xxxx.

In this case you must enter the number into your texting/messaging program and enter your response to the dispatcher.

Do not reply to the message you received, it does not go to the dispatcher!

Do not call if the Texcom message states to text to respond!

In all cases, include **your First and Last name** in the response.

The dispatcher will advise of any new updates to the call, information too large to type into the Texcom message, or of a sensitive nature that can't be openly distributed.

The dispatcher may also advise of a CERT Member in Charge (CIC) in charge of the call-out as well as names of other responding members and any preliminary instructions or recommended equipment.

All responding members must report directly to the CIC and follow their directions. With the exception of emergency first aid, members are not to begin response unless directed by Warren CERT. With the exception of emergency conditions members are not to leave the response without checking out with the CIC.

New members will also be advised that they are not to perform any action until the CIC arrives, new members must wait on the side lines, in safe location until given instructions by the CIC or dispatcher.

No member will respond to a call until they have checked in with dispatch!

In all references in the above to dispatcher it refers to the CERT dispatcher, under normal circumstances no contact will be made directly to Warren PD 911 dispatch!

Should a situation or problem develop on a call-out notify CIC immediately. If an emergency develops and CIC is unresponsive or incapacitated notify then notify Warren PD dispatch

Check and update your texcom.com information occasionally. Phone numbers and email addresses do change.

do 1 thing

Being prepared for disasters and emergencies can seem like a big job. Many people don't know where to start, so they never start at all. With Do 1 Thing you can take small steps that make a big difference in an emergency.

Do 1 Thing is a 12-month program that makes it easy for you to prepare yourself, your family, and your community for emergencies or disasters.

Warren CERT is proud to be a partner with do 1 thing. Every month we will be showcasing some of the information from do 1 thing for Individuals and Business's.

Individual:

Power

Goal for October: Be able to safely meet your basic needs during an electrical outage.

Power Outage Safety

Discard food if the temperature in your refrigerator exceeds 40 degrees for more than 2 hours. Stay away from downed power lines and anything they are in contact with such as fences or buildings. Never drive over downed power lines; they may be energized. Never use charcoal or gas grills inside a structure. You may be overcome by carbon monoxide. If you must use candles, be sure to use them safely. Never leave candles burning unattended.

Power: Have flashlights ready in an easily accessible place and check batteries in flashlights and radios.

Power: Acquire and learn how to safely use a portable generator.

Power: Create a power outage plan and decide what you can do before, during and after a power outage to minimize the effect on your household.

Read More: <https://do1thing.com/topics/power>

Business:

Emergency Plans

Goal for Step 10: Create emergency and continuity plans that will guide your employees and your business through disaster.

Disasters and emergencies are low-frequency, high-stakes events. Because they don't happen every day it's easy to postpone planning for them. Unfortunately, failure to plan can result in financial loss, injury, and death when emergencies do occur. Planning doesn't have to take a lot of time or resources. Investing a few hours now can save money and even lives later on.

Emergency Plans: Create emergency plans for your building.

Emergency Plans: Create contingency plans for your business.

Emergency Plans: Formalize your emergency plan.

Read More: <https://do1thing.com/topics/plans>

Thank You to do1thing

<http://do1thing.com/>

A Warren CERT Partner



High Performance Jump Starters and Portable Battery Packs

Our award-winning Jump Starter line designed for the average Joe to the seasoned Pro

- > Maximum power output and performance, up to 10L (up to 5L Diesel)
- > Revolutionary, patented Smarty Clamps® walk you through a SAFE, foolproof jump every time
- > Detect-o-Matic™ USB charger automatically provides fastest charge to your phones & tablets
- > Larger models feature both 12V and 19V port for powering laptops, fans and more
- > Powerful tactical flashlight can be seen for miles plus strobe and SOS
- > Staying power – 1000 charging cycles and up to 3 years of standby power on a single charge
- > IP65 certified, built tough for water, dust and dirt resistance

[Basic Jump Starters](#) [Quick Comparison](#) [High Performance Jump Starters](#)

WeeGo's new line of Rechargeable Battery Packs offers increased performance at up to half the price of our previous models! All three models offer increased input and output charging speeds - which means you can charge both your WeeGo and your mobile device even faster than before. Our Tour 10400 also has Detect-o-Matic™ super-quick charging which detects & provides the fastest-possible charge for your device and Pass Thru charging which allows you to recharge your WeeGo and your device at the same time. In addition to their increased performance, the Tour 5200 and Tour 10400 also store inside of a super-fun, retro-inspired tin box!

Phones, tablets, portable speakers, GoPro®, e-readers...the list of portable devices goes on, but your battery doesn't – and when that time comes, WeeGo Rechargeable Battery Packs are there to ensure you keep going without interruption!

Battery Packs



12V Power

For your on-the-go devices



Use WeeGo to Power...



Fans



Air Compressors



Travel Mugs & More!

* 12V Adapters available: sold separately



Tour 2600	Tour 5200	Tour 10400

